

five years of progress

CANAL
COMMUNITIES PARTNERSHIP

2001 - 2005

canal communities partnership

five years of progress



introduction



Canal Communities Partnership (CCP) is a local development organisation serving the communities of Bluebell, Inchicore, Islandbridge, Kilmainham and Rialto.

CCP is one of 38 area partnership companies set up around the country in areas of particular disadvantage. In essence the role of CCP is to promote a partnership approach to addressing problems of disadvantage, exclusion and unemployment in the canals communities.

Serving the communities
of **Bluebell, Inchicore**
Islandbridge Kilmainham
and **Rialto**

To address these problems CCP uses a multi-pronged approach and engages in work in the areas of **Unemployment, Enterprise, Child Care, Adult Education, Community Development** and **Education**. This approach allows us to address the different aspects of disadvantage in a comprehensive manner.

CCP uses a multi-pronged
approach and engages in
work in the areas
of **Unemployment**
Enterprise Child Care
Adult Education
Community Development
and **Education**

CCP is an independent limited company run by a Board of Directors, which is itself a partnership as the board comprises representatives from state agencies, community groups, social partners and elected representatives. In total CCP employs about 25 staff. Most of the funding for our work is provided by Pobal (formerly ADM) under a programme known as the Local Development Social Inclusion Programme (LDSIP). **This Programme runs from 2000 – 2006**. Apart from funding from Pobal, FÁS is the primary funder of our Local Employment Service (LES).

We believe that our work over the past five years has been important and of practical benefit to the people of the canals area. As we come toward the end of our current programme we are producing this brief report to highlight our work and to demonstrate how it is making a difference.

Despite our efforts, and the efforts of many other state and community agencies, problems of poverty, disadvantage and unemployment persist in the canals area. We have no doubt, therefore, that **our work will continue to be needed after 2006**.

tackling unemployment

Addressing problems of long term unemployment and distance from the labour market is a key part of CCP's approach to addressing social exclusion and poverty.

The main vehicle for this work is our Local Employment Service (LES), which is a specialised employment support service designed to provide one to one support to the long term unemployed and others who are 'distant from the labour market'.



The LES employs a specialised team of mediators, outreach workers and other support staff. It has offices in Bluebell, Rialto and Inchicore which means it is local and easily accessible. Clients of the LES can meet on a one to one basis with a mediator who will help them explore their various options in getting a job, going back to education or accessing training.

In addition to this one to one work the LES supports its clients by running a job club programme and a specialised support service for ex-prisoners called Trasnan. More recently a range of short term training programmes, to help upskill clients, have been run from the Goldenbridge Integrated Services Complex.

features

Through our Trasnan project we have been able to meet offenders in prison before their release and help them start preparing for the world of work when they are released. The prison authorities have worked with us by allowing prisoners out on day release so they can attend our training programmes. In this way the chances of prisoners accessing employment or further training when they are released have been increased.

The Goldenbridge Integrated Complex, which is owned and developed by Dublin City Council, has become an important resource in our efforts to prepare people for work. It houses both our Jobs Club and training rooms. The training room has 12 computers and is able to provide basic computer training as well as courses in secretarial skills and bookkeeping. The Complex is also home to St. Michael's Regeneration Board, a new childcare facility and the Londubh project and is a good example of an integrated resource facility in action.

jobs club

As part of the overall approach to addressing unemployment a series of job clubs are run every year. These clubs are designed to assist and prepare unemployed people for the world of work.

Job clubs usually run for 4 weeks and can cater for around 15 participants each time.

Over the course of the programme participants are helped with CV preparation, job applications, interview techniques and personal and social development skills. A number of participants are supported to achieve some FETAC accreditation while in the job club

Two full time staff run the jobs club which means they can give detailed attention to the needs of their participants. Seven job clubs are run each year catering for approximately 80 people. Follow up surveys have shown that 30% - 40% of participants find employment after they have been on a jobs club.

specialised
employment
support service

facts and figures

tackling unemployment facts & figures...

- **Over 1300** clients have been supported by the LES, most of whom are in the 24 – 35 years age bracket
- Most of these clients are long term unemployed/lone parents, with limited education and skills. Many come to the LES with a range of other ‘difficulties’, whether that is homelessness, addiction, mental health or family problems
- **Over 300** of these clients have been placed in jobs
- **Over 700** clients have been supported to take part in various education and training programmes, designed to upskill them and prepare them for work. Since 2004 a number of these short term accredited training programmes have been run by the LES itself from its premises in the Goldenbridge Complex
- **The Jobs Club** has catered for **364** participants

programmes designed to upskill

supporting local enterprises

While some people seek a return to employment, there are others, albeit a smaller number, who are keen to pursue the self employment option and set up a small local enterprise. CCP's Enterprise Coordinator provides expert support to these emerging entrepreneurs and guides them through the various stages of business planning, tax registration, marketing and all the other aspects of becoming self employed.

Again this is an accessible one to one point of contact. In addition, group based training programmes are organised on different aspects of running a small business.

Most of these businesses are small, usually one person operated and examples would be taxi drivers, gardeners, hair dressers, mechanics, musicians, artists and food shops.

Apart from this one to one support work with clients, a small number of social enterprises have been supported (an example of this is the community run launderette in Fatima Mansions) and these are run by a community organisation with the aim of responding to a social or local need.

Thinking of our future entrepreneurs, programmes have also been put in place, in cooperation with local schools, to introduce young people to the idea of self employment as a career option.

features

The canal's area has a developing arts sector. A number of painters, musicians, drama teachers and other artists have sought support and business advice from our enterprise coordinator in becoming self employed. A small artists' network has been supported and an annual arts and crafts fair is run at Christmas time to provide a sales and promotional outlet.



facts and figures

- **280 clients registered with the service and got support, information and guidance**
- **Of these over 120 moved on to setting up a small, usually one person business**
- **65 of these enterprises accessed financial support through the state funded Back to Work Enterprise Allowance (BTWEA)**
- **70 clients took part in a range of enterprise Training programmes**
- **65 young people engaged in enterprise training and education**
- **3 local social enterprises were supported**

supporting adults into education

Data from the last census shows that 30% of the canal's population had, at best, a primary education only. This is changing but there is still a significant number of people keen to get back to education at a range of levels – whether that is accessing a basic education course, sitting the Leaving Cert. or moving into 3rd level.

CCP's adult education coordinator supports local groups who are developing community based education activities for adults. There is now a small network of community groups, in areas such as Fatima Mansions, Dolphin House and St. Michael's Estate, providing courses and programmes which are positive in themselves and can also be an important 'first step' on the road back to education.

Over the past number of years CCP has worked in conjunction with Inchicore College of Further Education in developing innovative accredited training courses – in, for example, Community Care and Business Studies – which have been successful in introducing adults to a 3rd level environment.

In addition, via the Millennium Partnership Fund, sponsored by Pobal, a number of young and mature students are given small scale financial support, and guidance, which can be of very practical benefit to them in their 3rd level careers.

features

The Inchicore Men's Group was set up to provide an educational and personal development opportunity for a small group of isolated men. It can sometimes be difficult to engage men in education programmes but this group has built itself slowly and carefully and is now focusing on providing health and social development education for its participants.

Under the Equality for Women programme a number of key community organisations and the Partnership are working collaboratively on a project designed to provide 'first chance' education to women who are difficult to engage. Seven community groups from all the main neighbourhoods – Fatima, Dolphin, Bluebell, St. Michaels, Inchicore – are involved, with groups sharing their ideas and experience on the best ways to reach out to women who are most isolated. Specialised and tailored programmes are being organised in local community venues – on parenting, personal development, computer skills etc – as a means of engaging women in a non-threatening manner.

developing
innovative
accredited
training
courses



facts and figures

supporting adults into education facts & figures...

- **Over 40 students have been supported in participating in an accredited education course in Inchicore College of Further Education**
- **180 students accessed nearly €100,000 in financial support via the Millennium Fund**
- **Support, advice and guidance was provided to 16 local adult education projects and networks. These projects in turn reach out to hundreds of adults**
- **Funding of €200,000 per annum for 2 years accessed via the Equality for Women programme**

support, advice & guidance

promoting quality & accessible childcare

By now we are all well aware how important good quality, accessible child care is in supporting those seeking to return to employment, training or education. We know also, however, both nationally and locally, how underdeveloped our child care services are. The absence of proper national policies on child care provision, especially for those on low incomes, has been a huge barrier to service development.

Despite these obstacles the local community sector, and the partnership's child care coordinator, have worked to develop a local child care 'infrastructure'. Local services have developed in Fatima, Dolphin, Inchicore and Goldenbridge, providing full and part day care. There are a number of playgroups in place and new day care services are in the pipeline for Bluebell and the Goldenbridge Complex.

In addition to these services, other developments have included a parent and toddler group and a childcare information bureau (developed with Ballyfermot and KWCD Partnerships) which will cater for the whole Dublin South Central region. The Partnership has also emphasised the

importance of child care services being of good quality. To this end a network of local childcare workers has been established who engage in a range of training and development programmes.

Support has been provided also to a number of local women who have accessed a number of FETAC accredited child care training programmes in the local Inchicore College of Further Education.



features

Parenting can often be difficult and lonely and these problems can be magnified if you are in a new country without family or friend. The parent and toddler group was set up with the needs of 'new community' residents in mind. With the support of Inchicore College of Further Education (ICFE) it operates twice a week in the new sports hall. Catering for up to 15 parents and their children it provides an important outlet for mixing, socialising and learning. The group is run by parents themselves and with some financial support from the HSE it will now be able to develop its range of activities.

Many community child care services have used Community Employment workers to staff their services.

While this has been a positive resource some of these workers have come to child care without the necessary training or qualifications. In recognition of this, CE schemes, with the support of CCP, have supported their staff to access the locally accessible range of child care training provided by Inchicore College. This training, which provides different levels of FETAC accreditation, can be accessed on a part time basis while students continue with their CE scheme.

The training has benefited students and services alike. A recent study conducted by CCP of over 50 students who undertook childcare training in ICFE, established that over 30 achieved some form of accreditation with a further 8 moving into employment.

facts and figures

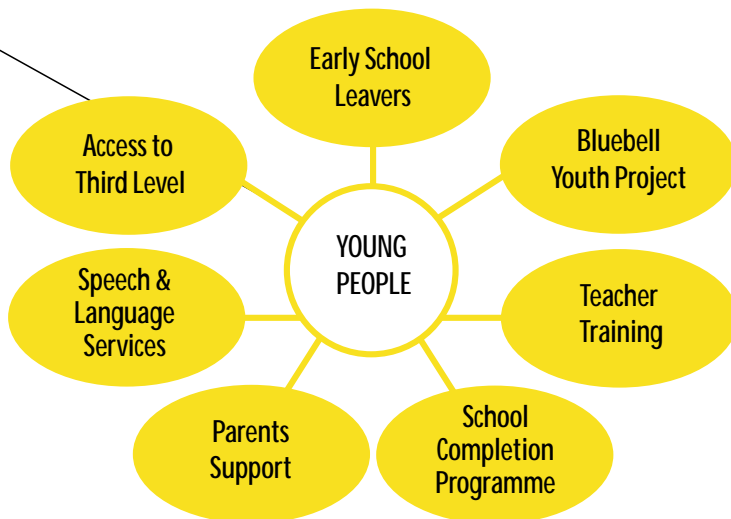
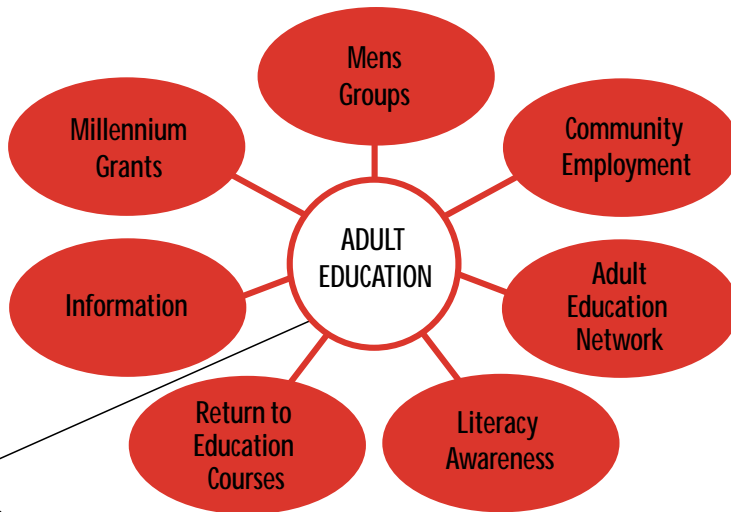
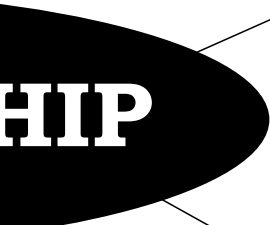
promoting quality & accessible childcare
facts & figures...

- **14** community based childcare services, providing approximately 300 places, have been given various types of support
- **4** key services have been supported to access Equal Opportunities Child Care Programme (EOCP) funding and these are providing up to **100** child care places
- **2** initiatives designed to improve access to information on child care have been supported
- Nearly **60** local students have been supported to access accredited child care training





snapshot of the partnership's work in 2005



community development

A central aspect of CCP's work is to support local community organisations in their efforts to address issues of concern to them. Working with local communities is an integral part of the whole approach underpinning the partnership's work.

Community development is a broad term and CCP's work in this area covers a range of activities and projects.

Support has been given to local community development projects and residents' groups who are working to improve their local neighbourhood. This support can range from sitting on management committees to committee skills training to assistance with funding proposals to project planning.

More recently CCP has given attention to the needs of identified 'target groups' – namely the elderly, new community residents and people with disabilities. In this regard, therefore, it has supported the development of an older people's network and a disability working group. Active support has been given also to the establishment of an intercultural centre for the canal's area. In these situations the aim is to support members of these 'target groups' to articulate and respond to their own concerns.

As in other areas, our community development work places importance on developing the skills of local community leaders and a lot of time is given to developing various training programmes for paid and voluntary workers on issues such as committee skills, time management, interculturalism, report writing and staff supervision. All this helps in developing the effectiveness of local community groups.

Neighbourhood regeneration has been a critically important issue affecting a number of communities in the canals area. CCP's community development team has supported, where appropriate, the various local community interests in their efforts to ensure that these regeneration initiatives give maximum benefits to local communities.

features

An Intercultural Centre is in the process of being set up in Inchicore with the idea of encouraging people of all cultures to live together in a community that understands, accepts and celebrates diversity and friendship.

Before embarking on setting up the centre a piece of research commissioned by the Partnership was carried out by a group of twelve people drawn from different cultures, including Irish people, to find out just exactly what people in the local community wanted from an Intercultural Centre.

Not only did the research indicate the type of centre that people wanted, it also showed that more than 10% of the people living in the Canal's area are from new communities.

The project has accessed financial support from the European Refugee Fund and Dormant Accounts Fund and with this support a co-ordinator has been employed and a premises in Inchicore is being sourced. A large team of enthusiastic volunteers has been recruited and when the centre opens it will provide information and referral, networking and activities that foster positive action for all members of the community.



facts and figures

community development facts & figures...

- Support provided to over **50** local development groups
- Support given to the establishment of **20** new community groups
- Support given to over **15** new and established community networks
- Support given to over **20** individuals to access accredited community leadership training
- Support given to **100** community leaders to access various short term training courses



tackling education disadvantage

By now we are all aware of the importance of a good education in combating disadvantage and social exclusion. Young people who stay on in school and achieve a Junior or Leaving Certificate are more likely to do well in later life.

CCP's approach to this issue has been twofold – firstly one of working alongside various mainstream education providers on various local projects and initiatives designed to tackle disadvantage; secondly, to support the development of innovative education projects which will complement existing schools and services.

So, for example, CCP has supported a number of projects, both in school and community based, designed to provide extra support for young people who need extra attention. Examples of this would include after school clubs and other in school or out of school projects designed to help young people at risk of leaving school early. Various projects designed to enhance the capacity and involvement of parents in their children's' education have also been developed

Work has focused also on strengthening the capacity of the existing services. CCP promoted and lobbied successfully for the extension of the national 'School Completion Programme' to cover all the main secondary schools serving the canals area.

Special in service training programmes have also been put in place for teachers of local schools so that they can be better equipped to deal with their pupils. And more specifically CCP has promoted the development of accessible speech and language services for children in its area. All of this work is designed to support 'the education system' in its work on addressing various aspects of education disadvantage.

More recently CCP has turned its attention to promoting greater community awareness of access to third level education. In addition to the Millennium Fund referred to above, CCP is now engaged in projects designed to encourage better understanding of a third level education for all sections of the community, whether that is children still in primary school, school leavers or adults returning to education

features

A significant number of young people in the Partnership area leave school before achieving any formal education qualification. In an attempt to address the issue of early school leaving an Education Development Worker was contracted in 2005 to set up an agreed framework of support for young people who left school without adequate qualification.

Research carried out by the Development Worker showed that interagency working wasn't happening. A pilot interagency working scheme was set up in Bluebell which included the Bluebell Youth Project, the School Completion Programme, the National Education Welfare Board, Youthreach and the Partnership. In the course of their work they identified a small number of young people out of the school system. The agencies are now committed to working collaboratively on meeting the needs of these young people and this approach is yielding practical benefits.



facts and figures

tackling education disadvantage
facts & figures...

- **4** after school community education projects were supported
- **15** projects designed to address various aspects of early school leaving were supported
- **4** community based parent support projects were assisted
- **90** teachers were supported to access various in-service education programmes
- **3** Third Level Access projects have been developed

designed to
encourage better
understanding

researching & highlighting exclusion

As part of our brief in addressing social exclusion CCP aims both to document its work and highlight different aspects of the social issues we encounter.

To this end some research studies and reports have been commissioned over the past five years. These have helped us in our understanding of the problems we deal with and how they can be addressed. They have also been useful in highlighting the issues which need to be addressed at a national policy level if they are to be resolved.

Some of the more relevant reports published by CCP would be the following:

2001

Community Property Feasibility Study

Prepared by Sharon Cosgrove (January 2001)

Audit of Community Development Training Needs

Dara Moran (August 2001)

2002

People with Disabilities: Needs Analysis

Dr. Alan Bruce. (2002)

Step-by-Step: An Information Resource for Members of the New Communities

Edited by Fidele Mutwarasibo & Michael McCarthy (2002)

Canal Communities Childcare Audit

Angela Canavan (March 2002)

2003

Children First and Foremost – An Education Investment Plan for Canal Communities

Stephen Rourke (March 2003)

Access All Areas? – An accessibility audit of public, private and community buildings in the Rialto, Bluebell and Inchicore areas

Canal Communities Partnership (December 2003)

2004

Fatima Mansions Skills Audit Report

Canal Local Employment Service Network (March 2004)

A Price Worth Paying - a report on the sustainability of childcare services in the Canal Communities Partnership area

ANMAR Consultants and R&D Consultants (April 2004)

2005

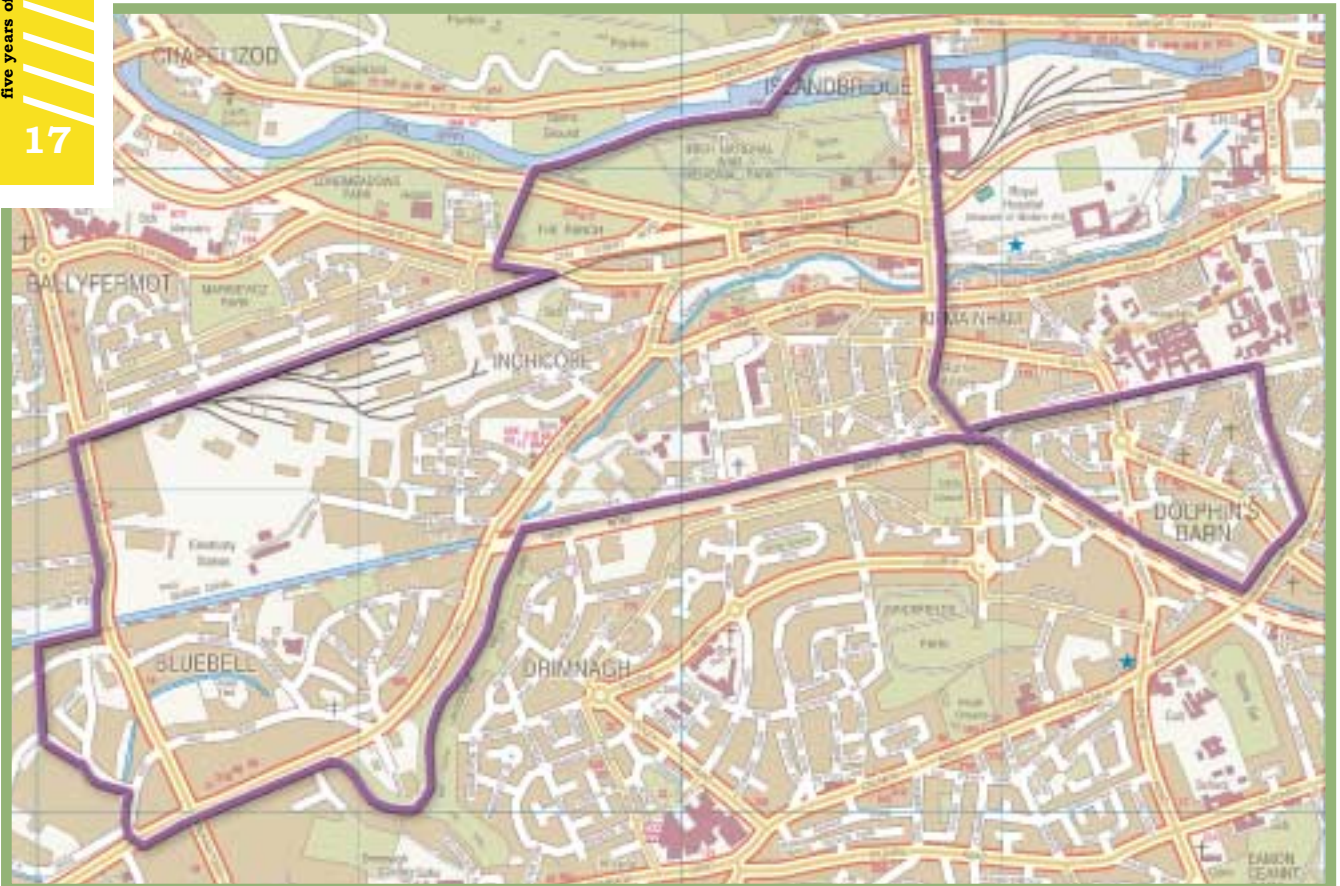
Discussion Paper: Speech and Language Therapy in the Canal Communities Partnership Area (2005)

Canal Communities Intercultural Centre Research Report

By Joan Harman (June 2005)

Please contact Denis Geoghegan, Information Officer, if you wish to access any of these reports. Tel 01 473 2196 or email denisg@canalpartnership.com

map of canal area partnership & board membership may 2006



Name

Organisation

Sector

Bronagh O'Neill	Regional Youth Service	Community
Rita Fagan	St Michael's Family Resource Centre	Community
John Kiely	Dolphin Hse Community Development Association	Community
Joe Donohoe	Fatima Groups United	Community
Rose Martin	Older People's Network	Community
Brian Keenan	Inchicore CDP	Community
Sara McMahon	Childcare Network	Community
Reginald Oko-flex Inya	Rainbow Group	Community
Deirdre Eustace	Disability Working Group	Community
Ann Swords	Rialto Community Network	Community
Peter Kenny (Chair)	ICTU	Social Partner
Gerry Byrne	Dept of Social & Family Affairs	Statutory Agency
John McCusker	Health Service Executive	Statutory Agency
Michael Challoner	City of Dublin VEC	Statutory Agency
Eileen Quinliven	Dublin City Council	Statutory Agency
Carol Kavanagh	FÁS	Statutory Agency
John Gallagher	Dublin City Councillor	Local Government
Michael Conaghan	Dublin City Councillor	Local Government
Mary Ryder	LDTF	Drugs Task Force
Aiden Lloyd	Pobal liaison person (<i>not a board member</i>)	Pobal

canal communities partnership contact information at may 2006

Administration Office Inchicore

197 Tyrconnell Road
Inchicore
Dublin 8
Tel: 473 2196
Fax: 453 4857
Email: info@canalpartnership.com

Manager

Brian Kenny
Tel: 473 2196
Email: kennybj@canalpartnership.com

Administrator

John Connolly
Tel: 473 2196
Email: jc@canalpartnership.com

Information Officer

Denis Geoghegan
Tel: 473 2196
Email: info@canalpartnership.com

Finance & Administration Assistant

Jackie O'Toole
Tel: 473 2196
Email: jotoole@canalpartnership.com

Goldenbridge Integrated Complex

Emmet Crescent
Vincent Street West
Inchicore
Dublin 8
Tel: 453 7229
Fax: 453 7228

Enterprise Co-ordinator

Liz Byrne
Tel: 453 7229
Email: enterprise@canalpartnership.com

Support Office Bluebell

12A & 12B Bluebell Business Park
Old Naas Road
Bluebell
Dublin 12
Tel: 456 4220
Fax: 456 5063
Email: bluebell@canalpartnership.com

Receptionist

Fiona McDonnell
Tel: 456 4220
Email: bluebell@canalpartnership.com

Adult Education Co-ordinator

Catherine Dowling
Tel: 4584844
Email: adulteducation@canalpartnership.com

Community Development Co-ordinator,

Marja Almqvist
Tel: 458 4849
Email: marja@canalpartnership.com

Community Development Link Worker

Sharon Wallace
Tel: 458 4850
Email: sharon@canalpartnership.com

Community Development Link Worker

Maureen McGovern
Tel: 458 4853
Email: maureen@canalpartnership.com

Childcare Co-ordinator

Barbara Coates
Tel: 458 4843
Email: childcare@canalpartnership.com

Education Co-ordinator

Lucy Harrington
Tel: 458 4842
Email: education@canalpartnership.com



canal local employment service network & enterprise service contact information at may 2006

Goldenbridge Integrated Complex

Canal Local Employment Service Network
Emmet Crescent
Vincent Street West
Inchicore, Dublin 8

Administrator

Lorinda Billings
Tel: 453 7229
Fax: 453 7228
Email: goldenbridge@canallesn.ie

CLESN Co-ordinator

Evelyn Lane
Tel: 453 7229
Email: elane@canallesn.ie

Enterprise Co-ordinator

Liz Byrne
Tel: 453 7229
Email: enterprise@canalpartnership.com

Job Club Facilitator

Jackie Colgan
Tel: 453 7324
Email: jackiec@canallesn.ie

Training Mediator

Janet Shanks
Tel: 453 7229
Email: training@canallesn.ie

Rialto Office

398 South Circular Road
Rialto, Dublin 8

Reception

Carol Farrelly
Tel: 454 0935
Fax: 454 0790
Email: rialto@canallesn.ie

Mediators

Ernie Pimlott
Email: ernestp@canallesn.ie
Cathy Kerrigan
Email: cathyk@canallesn.ie
Tel: 454 0935

Outreach Worker

Irene Faye
Tel: 454 0935

Inchicore Office

103 Tyrconnell Road
Inchicore, Dublin 8

Reception

Leanne Zambra
Tel: 473 1881
Fax: 473 1800
Email: inchicore@canallesn.ie

Mediator

Scott Golden
Tel: 473 1881
Email: scottg@canallesn.ie

Outreach Worker

Therese Whelan
Tel: 473 1881

Bluebell Office

La Touche Road
Bluebell
Dublin 12

Reception

Lorraine Hickey
Tel: 409 7850
Fax: 409 7851
Email: bluebell@canallesn.ie

Mediator

Caron Hannigan
Tel: 409 7850
Email: caronh@canallesn.ie

Canal Communities Partnership (CCP) is a local development organisation serving the communities of Bluebell, Inchicore, Islandbridge, Kilmainham and Rialto.

Contact Details

197 Tyrconnell Road
Inchicore
Dublin 8

Tel: 473 2196

Fax: 453 4857

Email: info@canalpartnership.com

Website: www.canalpartnership.com

